

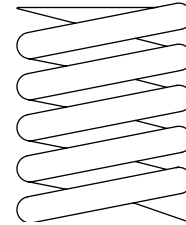
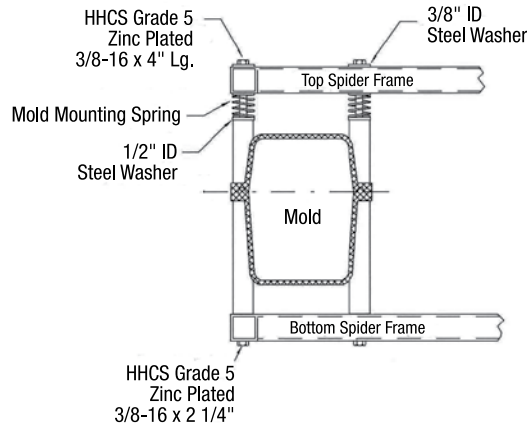
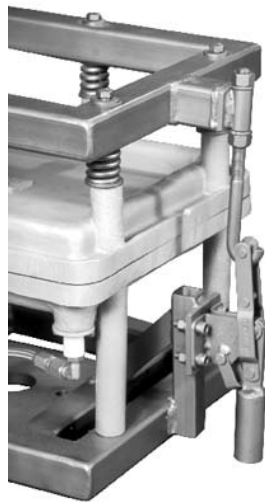
MOLD MOUNTING SPRINGS AND CANODE BLUING



SP-3601

Mold Mounting Springs

Mold mounting springs are inserted between the mold mounting post and steel frame. These durable, high-temperature springs ensure that clamping pressure is transferred uniformly along the mold parting line.



Wire Diameter	.250 ± .002
OD	1.240 ± .020
ID	.740 ± .002
Free Length	1.50 ± .002
Solid Height	1.01
Active Coils	3 Ref.
Total Coils	3 Ref.
Rate	1,846 lbs./inch
Load	1.285 height = 400 ± 40 lbs



CB-1200

Canode Bluing

Canode bluing is a water-soluble, non-toxic substance used for dye spotting while in the process of fitting parting lines. Bluing is sold in easy-to-use 8 oz. bottles.

Ordering Information

SP-3601	Mold Mounting Spring
CB-1200	Canode Bluing