

DOWELS



SD-0301



SD-0401



SD-55SD



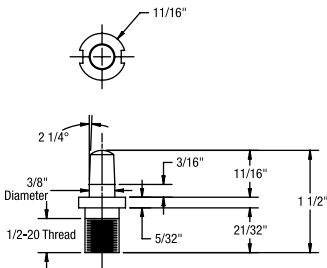
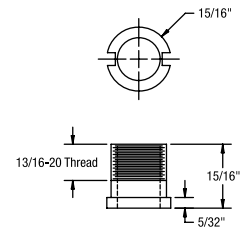
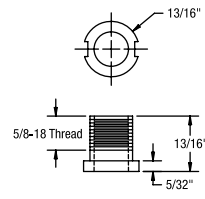
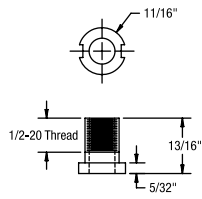
SW-0300 and SW-0400



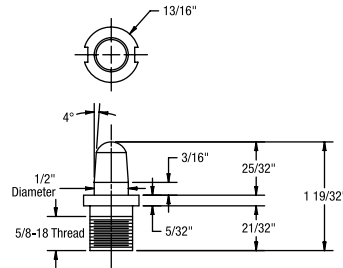
FW-5500

Protect the registration of parting lines.

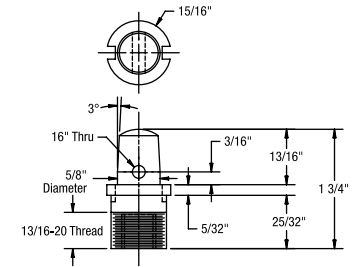
High-quality, time-saving, Sure-Lock® dowels can be used to locate mold halves or other mold pieces, aiding in positive alignment of parting lines. The #3 dowel sets have a 1/2-20 thread on both ends, also available with tapered interface, the #4 dowel sets have a 5/8-18 thread, and the #55 Husky dowel sets have a 13/16-20 thread. They are easy to install with the Sure-Lock® dowel wrench. The short ground pins can be used in areas where a mold piece is hinged.



SD-0301



SD-0401



SD-55SD

Ordering Information

| | |
|----------------|--------------------------------------|
| SD-0301 | #3 Sure-Lock® Dowel Set |
| SD-1301 | #3 Sure-Lock® Short Ground Dowel Set |
| SD-0401 | #4 Sure-Lock® Dowel Set |
| SD-1401 | #4 Sure-Lock® Short Ground Dowel Set |
| SW-0300 | #3 Sure-Lock® Wrench |
| SW-0400 | #4 Sure-Lock® Wrench |
| SD-55SD | #55 Husky Dowel Set |
| SD-55SG | #55 Husky Short Ground Dowel Set |
| SD-5500 | #55 Husky Wrench |