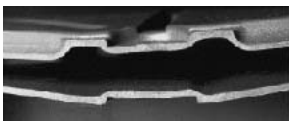


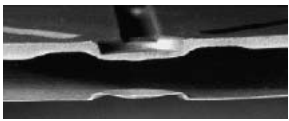
AIRFLOW AMPLIFIERS



Cross section of a double wall part



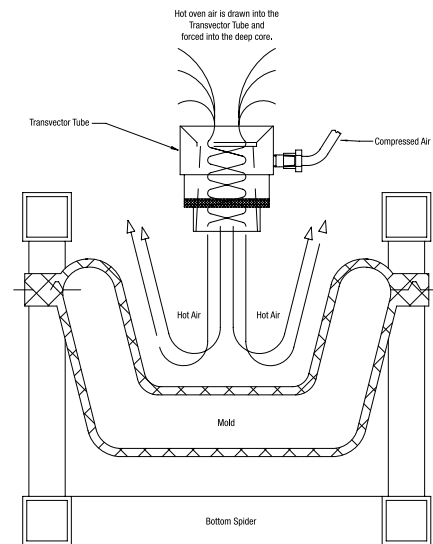
Molded with airflow amplifier



Molded without airflow amplifier

Control product wall thickness with Airflow Amplifiers.

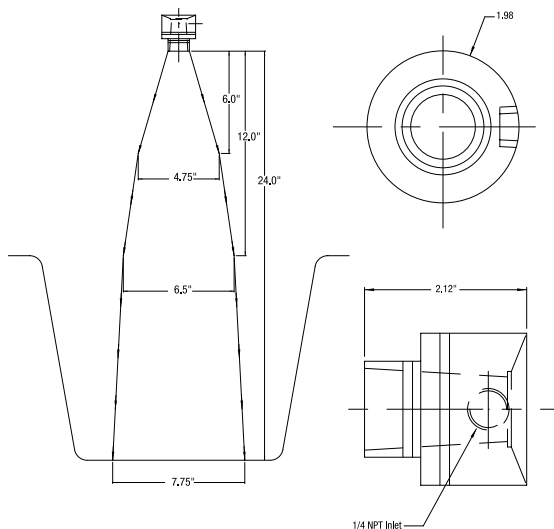
Airflow amplifiers are extremely useful in heating deep cores and other hard-to-reach areas. A thin stream of compressed air moves a large quantity of hot or cold oven air to the target site. By increasing the volume of air to a particular area of a mold, the molder can control the product wall thickness in that area. These units are easy to mount to the spider using our mounting bracket assembly (see page 10).



TV-2000

High-Performance Amplifier

This high-performance amplifier is specially designed for the rotomolding environment. The opening is preset to .003 to maximize the performance of the unit. This gives the molder the ability to run multiple amplifiers on the same air line without loss of pressure or a reduction in performance. The core and O-ring are silver plated to eliminate seizing and galling problems typically experienced when amplifiers are used at high temperatures.



Pressure	Velocity (spf) at 6"	Velocity (spf) at 12"	Velocity (spf) at 24"
20	11,400	5,700	2,700
40	17,600	8,800	4,200
60	24,000	12,000	5,700
80	30,400	15,200	7,300
100	37,000	18,500	8,800

Note: Reading based on maximum velocity at the specified distance.